

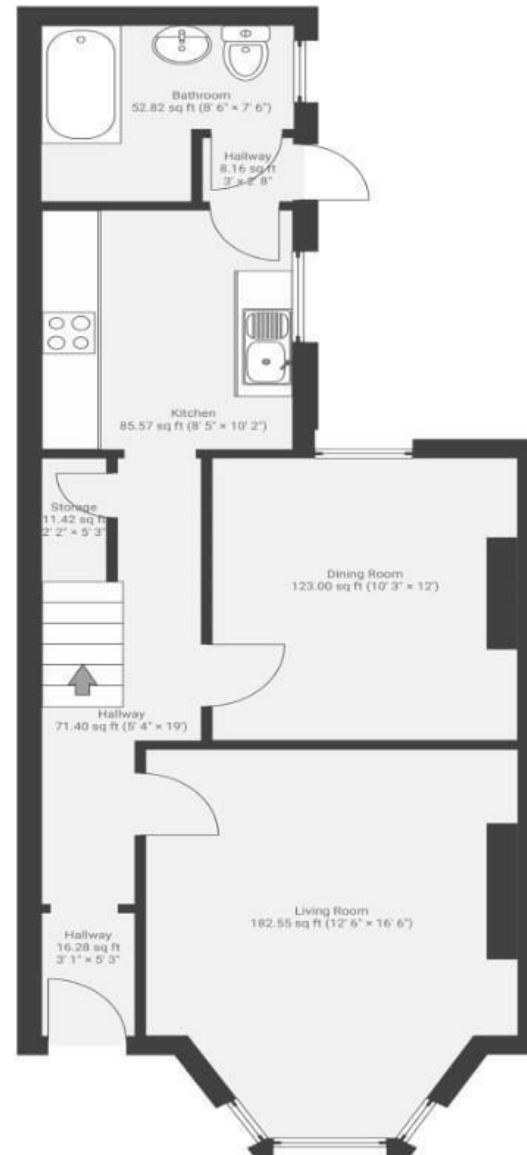
# Howard Road

## SOUTHVILLE

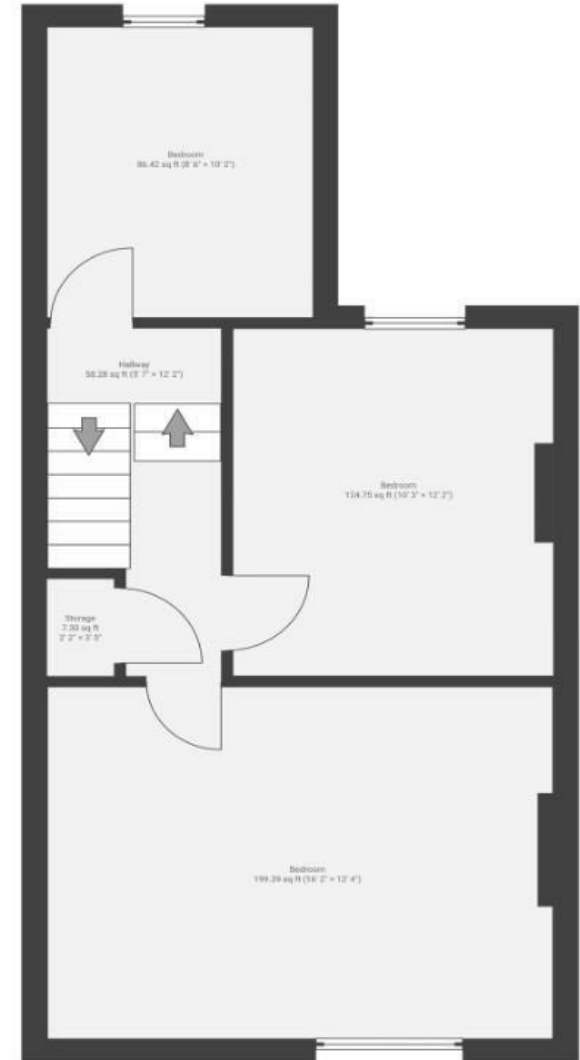
APPROXIMATE FLOOR AREA  
100.0 SQM / 1076 SQFT



GROUND FLOOR



FIRST FLOOR



Illustrations are for reference purposes only, measurements are approximate, not to scale.

**Boardwalk**

# Howard Road

SOUTHVILLE, BRISTOL

£

£480,000

zzz

3 Bedrooms



BS3 1QH



1 Bathrooms

*"Howard Road is such a friendly street with a real sense of community. Everything you need is just a short stroll away—from the cafés and shops of North Street to the vibrant Harbourside."*

